

B.M.S. College of Engineering, Bengaluru-560019

Autonomous Institute Affiliated to VTU

February 2025 Semester End Main Examinations

Programme: B.E.

Semester: III

Branch: Industrial Engineering and Management

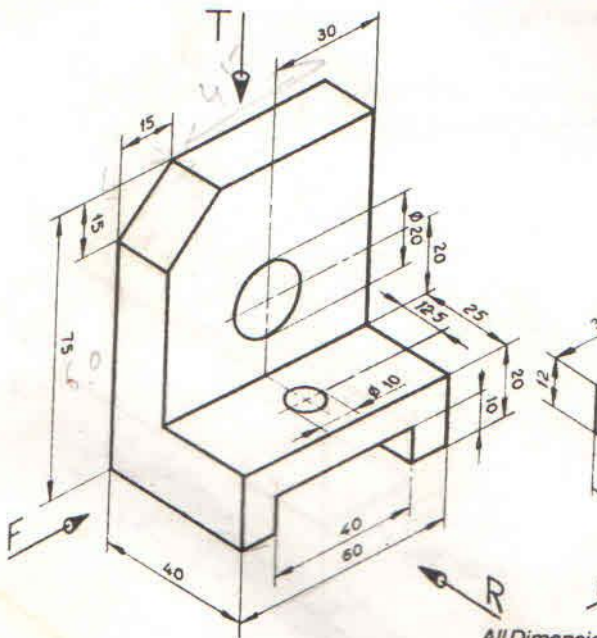
Duration: 3 hrs.

Course Code: 23IM3PCCMD

Max Marks: 100

Course: Computer Aided Machine Drawing

Instructions: 1. Answer all questions.
2. Missing data, if any, may be suitably assumed.

Important Note: Completing your answers, compulsorily draw diagonal cross lines on the remaining blank pages. Revealing of identification, appeal to evaluator will be treated as malpractice.			PART-A	CO	PO	Marks
	1)	Draw the views as shown with arrow mark. looking in the direction R for the object shown	 Fig.2.17 All Dimension	CO1	PO1	20
	2	Draw the profiles of Threads by taking pitch as 30mm. i) Whitworth Thread ii) ISO Thread-Indian Standard ii) SellersThread iv) AcmeThread	CO2	PO2 PO3	20	

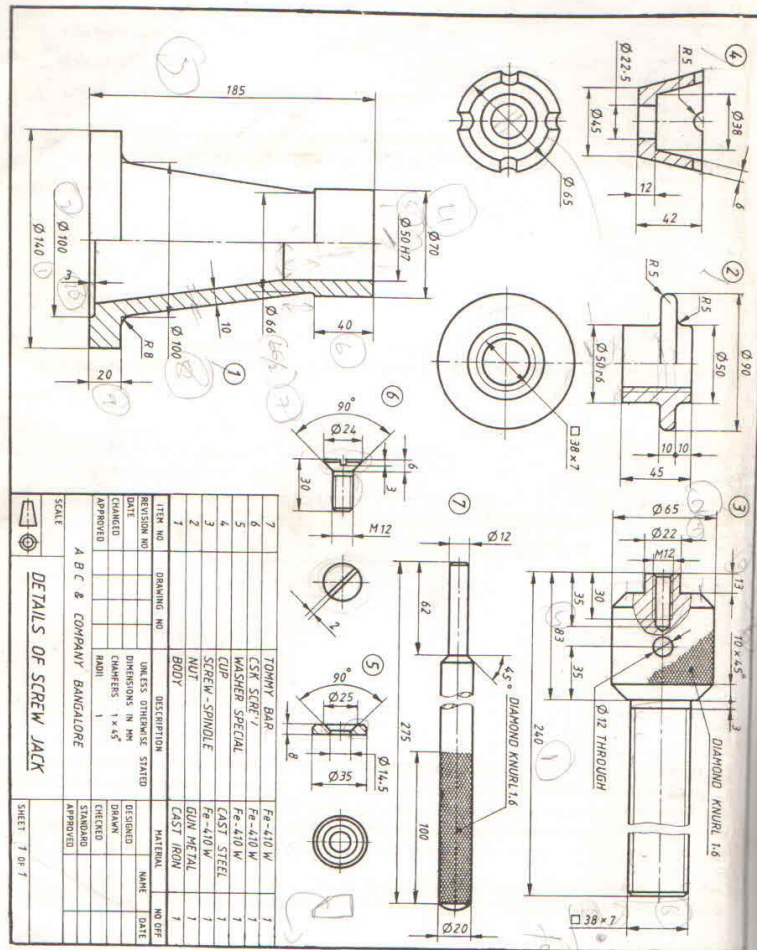
PART-B

3

The details of a screw Jack are shown in fig below. Assemble the parts of the jack and draw the following views of the assembly when the top face of the load bearing cup is raised to a height of 350mm above the bearing surface of the body.

1. Front view in half section

2. Top View



CO3

PO2
PO5
PO9

60
