

U.S.N.									
--------	--	--	--	--	--	--	--	--	--

B.M.S. College of Engineering, Bengaluru-560019

Autonomous Institute Affiliated to VTU

June / July 2025 Semester End Main Examinations

Programme: B.E.

Branch: Mechanical Engineering

Course Code: 23ME3PCCMD / 22ME3AECMD

Course: Computer Aided Machine Drawing

Semester: III

Duration: 3 hrs.

Max Marks: 100

Instructions: 1. Answer any TWO full questions, choosing one full question from each unit.
2. Missing data, if any, may be suitably assumed.

Important Note: Completing your answers, compulsorily draw diagonal cross lines on the remaining blank pages. Revealing of identification, appeal to evaluator will be treated as malpractice.			MODULE - I	CO	PO	Marks
	1		A cone, base 60mm diameter and axis 70mm long is resting on HP on its base. It is cut by a section plane perpendicular to VP and inclined at 75° to HP, to cut the axis of the cone at a point 20mm above the base. Draw its front view, sectional top view and true shape of section. Name the true shape.	CO1	PO1	20
			OR			
	2		A pentagonal pyramid of 20mm edge of base and 40mm high stands vertically with its base on HP and an edge of the base perpendicular to VP. A section plane perpendicular to HP and inclined 30° to VP cuts the pyramid such that it passes through the pyramid at a shortest distance of 5mm from its axis and in front of it. Draw its sectional FV and true shape.	CO1	PO1	20
			MODULE - 3			
	3		Fig.1 shows the details of a petrol engine connecting rod. Assemble the parts and draw the following views. i) Front view ii) Top view	CO2	PO2	80
			OR			
	4		Fig.1 shows the details of a petrol engine connecting rod. Assemble the parts and draw the following views. i) Front view with top half in section ii) Side view	CO2	PO2	80

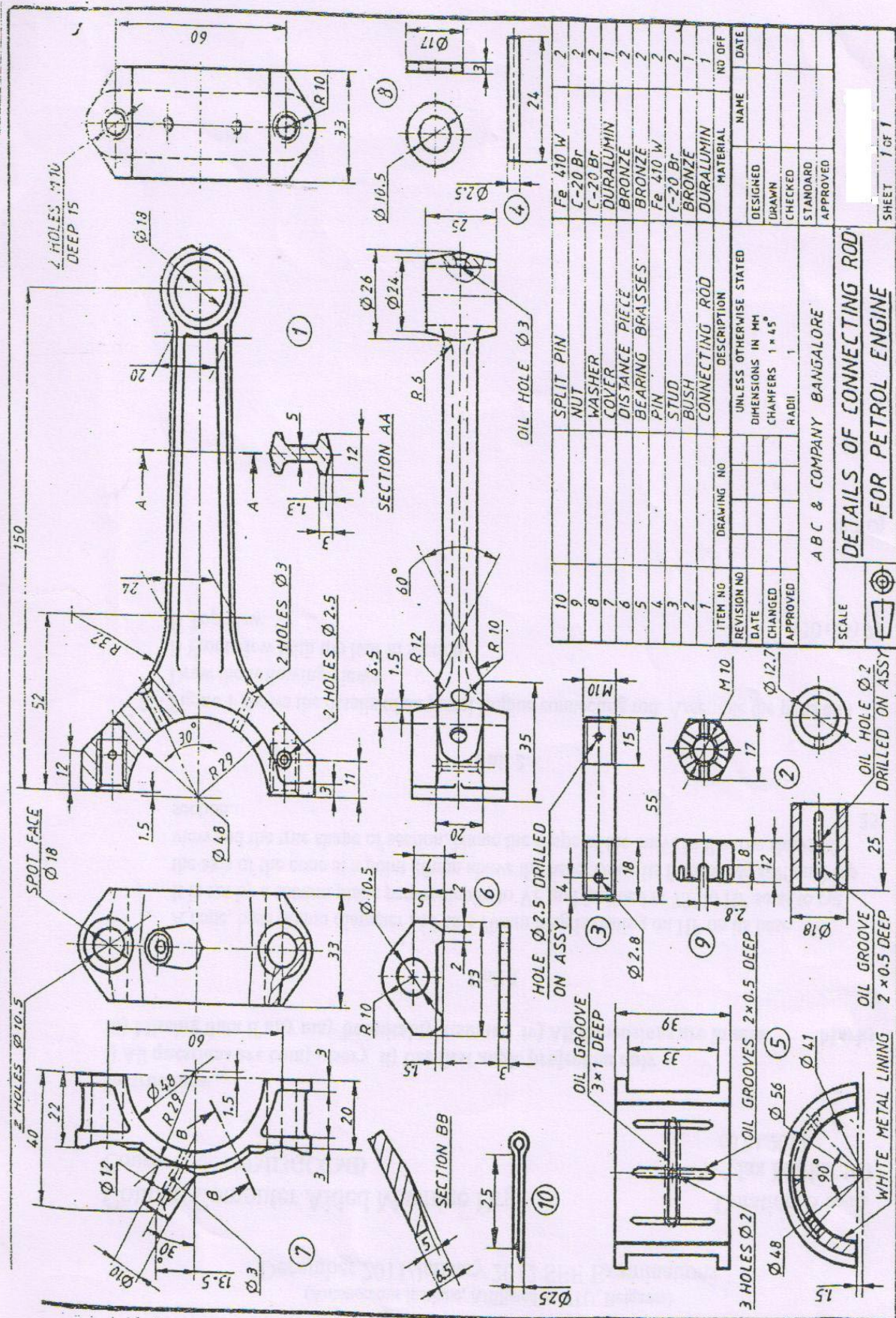


Fig 1. Details of petrol engine connecting rod